

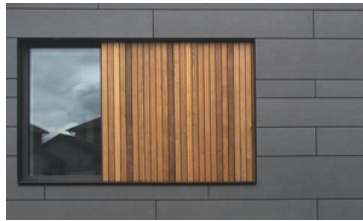
3m Air and Vapor Barriers



G Wood-Plastic Composite Cladding



K High Density Fiber Cement



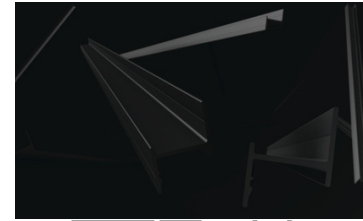
C Medium Density Fiber Cement



Sb Aluminum Composite Panels



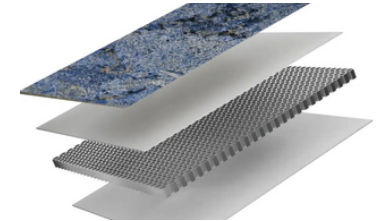
Ex Fiber Glass Girt Systems



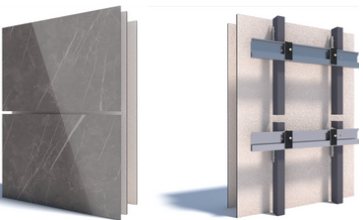
Ro Structural Insulated Sheathing



Ts Lightweight Honeycomb Stone Panels



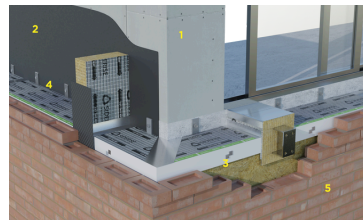
Gv Ventilated Porcelain Facade Systems



MI Cold Formed Steel Studs



Sr Firestopping



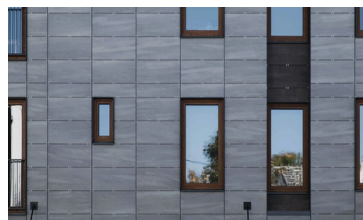
B Insulated Metal Panels



TW Thermally Modified Cladding



A uPVC + ALU Windows/Doors



L Skylights



U Magnesium Oxide Cement Panels



façadesX

envelope solutions

Building Envelope Solutions | 203-816-5600 | www.facadesx.com

f(x)

Founder:
Matt Capone - matt@facadesx.com
Principal:
Gustavo Mendonca - gustavo@facadesx.com
Technical Sales Representatives:
Michael Banas - mike@facadesx.com
Justin Chandler - justin@facadesx.com
Project Manager:
Noah Grubler - noah@facadesx.com